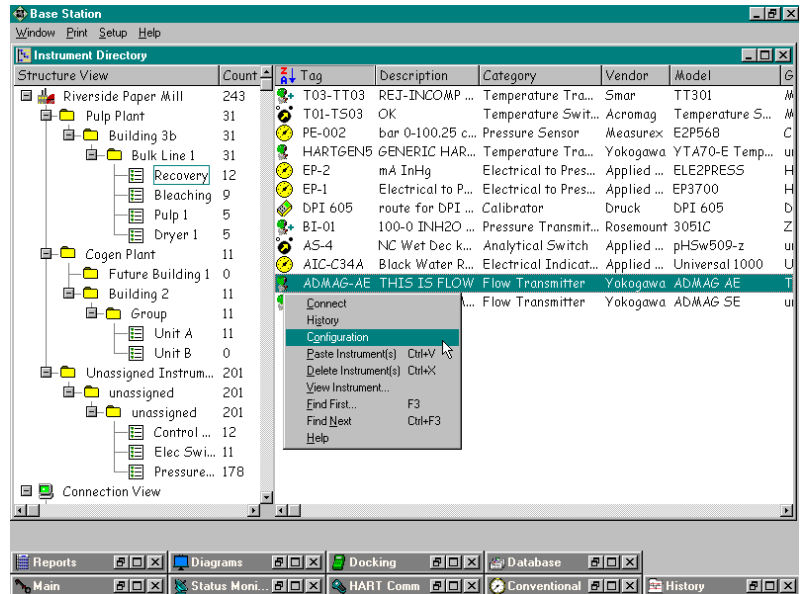


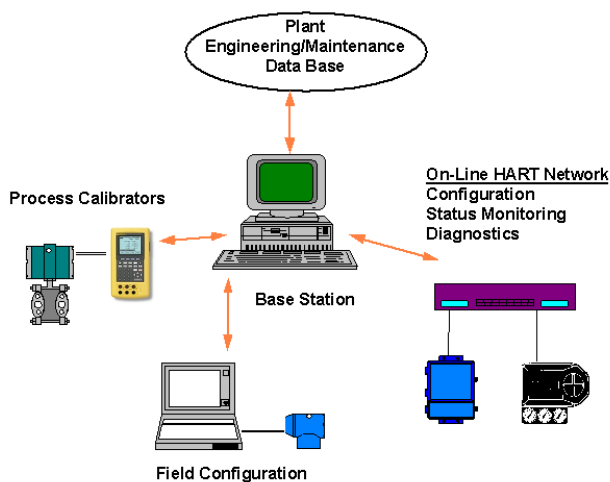


- ◆ **Work with all HART devices.**
- ◆ **Effectively manage both HART and conventional devices.**
- ◆ **Coordinate shop and field tasks.**
- ◆ **Set up networked access by multiple stations to shared database files.**
- ◆ **Make remote connections over HART multiplexer networks.**
- ◆ **Schedule, track and record process calibrations. Interface to the latest process calibrators.**



Cornerstone Base Station manages the commissioning, calibration and maintenance of industrial instruments. Base Station supports HART and conventional instrumentation. Create your HART database simply by connecting anywhere on the instrument loop. Base Station maintains a comprehensive instrument data base, with individual histories of the configuration, test, calibration and maintenance activities performed on each instrument.

Benefit from savings in the collection, recall and reporting of maintenance information. Increase the accuracy and standardization of calibration practices. Gain easy digital access to the improved features of HART instruments. Customize tag, plant, and service data. Use Base Station's itemized record keeping to support compliance with audit requirements. All of this at your fingertips in an easy to use graphical interface in Microsoft Windows.



Base Station stays current with the standard HART tables distributed by the HART Communication Foundation. Using these tables and the HART universal and common practice command sets, Base Station can communicate with any HART compliant device, even those not yet registered in the tables. Access to device specific parameters and functions is accomplished through a Cornerstone Model Support Library customized to the individual device.

Use Base Station to create a central HART maintenance station with remote access to field devices over networks of HART compatible multiplexers. Periodically scanned HART process data and device status retrieved over these network connections are then accessible by other applications via Dynamic Data Exchange (DDE).